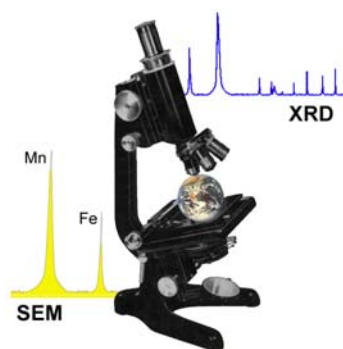


Grab Sample Analysis XRD and Petrological Results



Roger Townend and Associates
Consulting Mineralogists

Unit 4, 40 Irvine drive, Malaga Western Australia 6062

Phone: (08) 9248 1674

email: robertownend@westnet.com.au

Fax: (08) 9248 1502

JEFF WEBSTER

7-7-2010

CENTRAL PETROLEUM LTD,

85 STH PERTH ESPLANADE

S PERTH WA 6151

OUR REFERENCE 22743

YOUR REFERENCE 6157

ANALYSIS OF TWO ROCKS BY XRD /SEM AND OPTICAL MICROSCOPY.

R TOWNEND

SAMPLE A

ROCK SPECIMEN non magnetic dark brown banded iron oxide

POLISHED SECTION/XRD

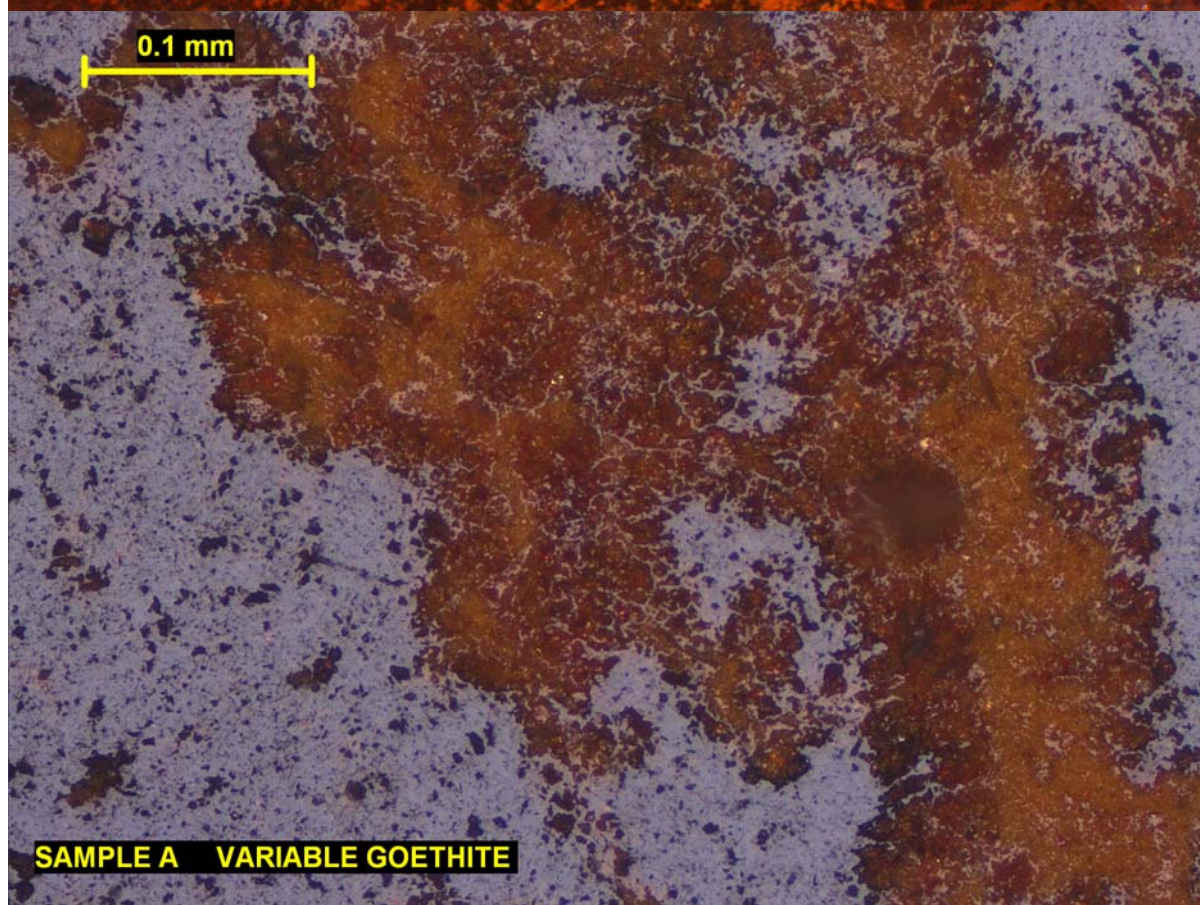
GOETHITE	DOMINANT
QUARTZ	ACCESSORY
BARITE	TRACE
KAOLIN	TRACE

CLASSIFIED AS A BANDED GOETHITE ROCK

The 4 cm length slide is about two thirds composed of part well fine grained crystalline, part earthy goethite and one third well crystalline fine grained goethite.

Quartz was detected by XRD>

A brief SEM scan found traces of fine barite and low Al silicate peak.



SAMPLE B

ROCK SPECIMEN non magnetic brown banded iron oxide

POLISHED SECTION

GOETHITE	DOMINANT
QUARTZ	TRACE
BARITE	ACCESSORY
KAOLIN	TRACE

CLASSIFIED AS A BANDED GOETHITE ROCK

The samples have a regular banded goethite texture with fines of more crystalline goethite. See optical images.

Quartz was a trace.

A brief SEM scan found significant quantities of fine barite that tend to concentrate in layers. See SEM image below (barite white spots).

